

[Home](#)

[About Us](#)

[Places to Go](#)

[How to use DisabledGo](#)

[News and Blog](#)

[Site Map](#)

You Are Here: [Home](#) > [Places to Go](#) > Venue



Holiday Inn - Derby - Nottingham M1, Jct.25



Guide Last Updated: 02/11/2017

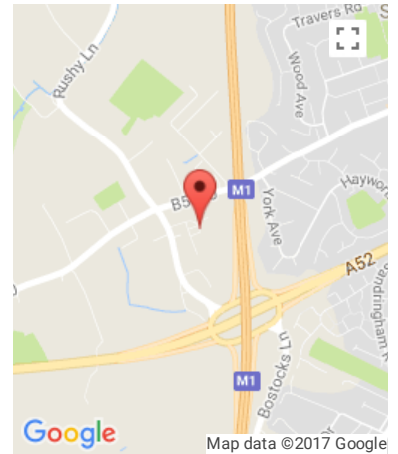


[Explain These Icons](#)

[Add To My Trip](#)

[View the Access Guide](#)

[Something Changed? Click Here](#)



Bostocks Lane, Sandiacre, Nottingham, Nottinghamshire, NG10 5NJ

0115 921 0500

<https://www.ihg.com/holidayinn/hotels/gb/en/nottingham/notde/hotel/detail/directions>

Venue Reviews

Average Rating: ★★★★★

[Review this Venue](#)

Access Guide

Hotel Introduction

Collapse -

Hotel Information

Collapse -

- The hotel has its own parking facilities.
- This hotel has its own restaurant located on the ground floor.
- Conference/meeting facilities are available.
- The conference/meeting facilities are located on the ground floor and lower ground floor.

Room Information

Collapse -

- The hotel has 92 rooms in total.
- There is an/are accessible room(s) within the hotel.
- The accessible room(s) is/are located on the ground floor.
- The hotel has 2 accessible room(s) with accessible ensuite facilities.
- There is/are 2 accessible room(s) with a bath.
- There is an/are adjoining room(s) available for the accessible room(s).
- The accessible rooms are 22m - 25m from the ground floor platform lift.

[Cookie Policy](#)

rd room(s) available on the ground floor.

- There is an/are adjoining room(s) available for the standard room(s).
- Rooms on other floors are accessed via stairs.
- Bed raisers are not available on request.
- Bath mats are available on request.
- All televisions have subtitles available.

Getting Here

Collapse -

By Road

Collapse -

- This hotel is located on the outskirts of Derby, just off Junction 25 of the M1. The hotel is located on Bostocks Lane, just off the A52.
- This hotel has a car park which is free for all users.

By Bus

Collapse -

- There is not a bus stop within 150 metres of the hotel.
- The nearest bus stop is located on the B5010 (Derby Road), approximately 280 metres from the hotel.
- [For more information on buses in Nottinghamshire and Derbyshire please click here \(opens new tab\).](#)

By Train

Collapse -

- The nearest Railway Station is Derby.
- Derby station is situated in the centre of Derby and is approximately 7.9 miles from the hotel. There are bus and taxis available from the station to the hotel.
- [For more information on National Rail please click here \(opens new tab\).](#)

Getting Help and Assistance

Collapse -

- There is a member of staff available for help and assistance.
- Staff receive disability awareness/equality training.
- Staff do not receive deaf awareness training.
- There is not a member of staff trained in British Sign Language.
- British Sign Language interpreters cannot be provided on request.
- The alternative formats documents can be provided in include; large print on request.
- There is an assistance dog toilet or toileting area at the venue/near by.
- The assistance dog toilet or toileting area is located on the grass areas surrounding the hotel.
- Water bowls for assistance dogs are available.
- There are not mobility aids available.

Parking

Collapse -

Parking

Collapse -

- The hotel does have its own parking facilities.
- The car park is located at the front, side and rear of the hotel.
- The car park type is open air/surface.
- The car park does not have a height restriction barrier.

Cookie Policy

re a barrier control system.



- Controls at the barrier are not within the range of 100cm to 110cm.
- The barrier controls/touchscreen can be reached from the car.
- The car park surface is tarmac.
- There is a/are Blue Badge parking bay(s) available.
- The Blue Badge bay(s) is/are clearly marked and signposted.
- There is/are 4 designated Blue Badge parking bay(s) within the car park.
- The dimensions of the designated Blue Badge parking bay(s) surveyed are 372cm x 600cm (12ft 2in x 19ft 8in).
- There is a 120cm hatched zone around the Blue Badge parking bay(s).
- Parking spaces for Blue Badge holders do not need to be booked in advance.
- Clearly marked/signposted parent and child parking bays are not available.
- All parking spaces are provided on a first come first served basis.



Paying

Collapse -

- There are not parking charges for the car park.

Access from the Car Park

Collapse -

- The route from the car park to the entrance is accessible to a wheelchair user with assistance.
- Assistance may be required because there is/are slopes/ramps.
- The entrance is clearly visible from the car park.
- The surface on the approach to the entrance is tarmac and concrete tiles.
- There is not a road to cross between the car park and the entrance.
- There is some tactile paving on dropped kerbs between the car park and the entrance.
- The nearest designated Blue Badge parking bay is approximately 21m (22yd 2ft) from the hotel main entrance.

Drop-off Point(s)

Collapse -

- There is a/are clearly marked drop-off point(s).
- The drop-off points(s) is/are located in front of the entrance.
- The route from the drop-off point(s) to the entrance is accessible to a wheelchair user with assistance.
- Assistance may be required because there is/are slopes/ramps.

Comments

Collapse -

[Cookie Policy](#)

iction barrier for the rear car park.

- The height restriction is 2.35m
- The barriers to enter the hotel car park are automatic.
- To exit the hotel a keycode has to be entered.
- The keycode is issued at reception.
- On arrival all guests and visitors must register their vehicle registration number in order obtain free parking (please see reception section).

Outside Access (Hotel Main Entrance)

Collapse -

- Entrance Collapse -
- This information is for the entrance located at the front of the hotel.
 - The entrance area/door is clearly signed.
 - There is ramped/sloped or stepped access at this entrance.
 - There is a canopy or recess which provides weather protection at this entrance.
 - The entrance door(s) does not/do not contrast visually with its immediate surroundings.
 - The bell/buzzer is in a suitable position to allow wheelchair users to gain access.
 - The main door(s) open(s) automatically.
 - The door(s) is/are double width.
 - The width of the door opening is 102cm.
 - There is a second set of doors.
 - The door(s) open(s) automatically.
 - The door(s) is/are double width.
 - The width of the door opening is 104cm.
 - There is a member of staff available for assistance at this entrance.



- Ramp/Slope Collapse -
- The ramp/slope is located to the left as you face the entrance.
 - The gradient of the ramp/slope is slight.
 - The ramp/slope is permanent.
 - There is a level landing at the top of the ramp/slope.
 - There is a/are handrail(s) at the ramp.
 - The handrail(s) is/are on both sides going up.
 - The width of the ramp/slope is 103cm (3ft 5in).
 - The ramp/slope does bypass the step(s).

- Step(s) Collapse -
- The step(s) is/are located to the right as you face the entrance.
 - There is/are 5 step(s).

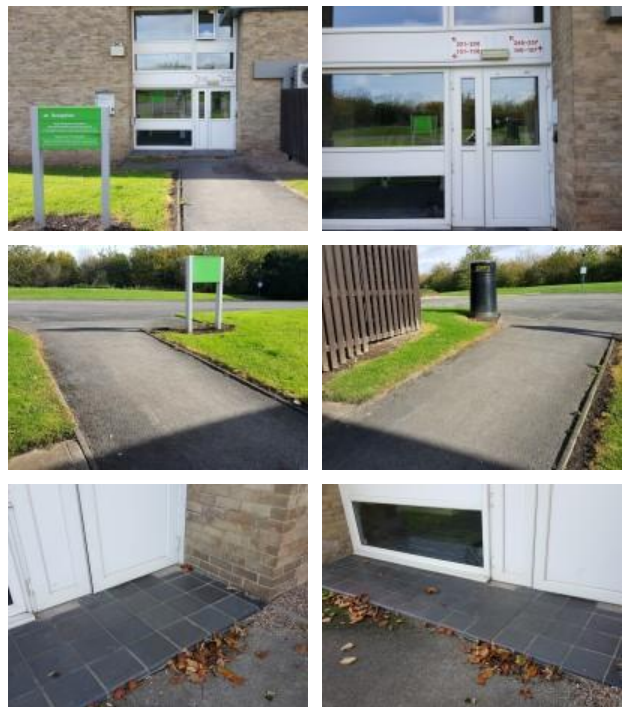
[Cookie Policy](#) arily marked.

- The step(s) has/have tactile paving at the top and bottom.
- The height of the step(s) is/are between 15cm and 18cm.
- The going of the step(s) is/are not between 30cm and 45cm.
- There is a/are handrail(s) at the step(s).
- The handrail(s) is/are on both sides going up.
- Handrails are not at the recommended height (90cm-100cm).
- Handrails do cover the flight of stairs throughout its length.
- Handrails are easy to grip.
- Handrails do not extend horizontally beyond the first and last steps.

Outside Access (Hotel Rear Car Park Entrance)

Collapse -

- Entrance Collapse -
- This information is for the entrance located leading from the rear car park.
 - The entrance area/door is clearly signed.
 - There is ramped/sloped and stepped access at this entrance.
 - There is not a canopy or recess which provides weather protection at this entrance.
 - There is a dark mat or floor marking at this entrance that might be perceived as a hole.
 - The entrance door(s) does not/do not contrast visually with its immediate surroundings.
 - A key card is required for access at this entrance.
 - The height of the key card reader is 114cm.
 - The main door(s) open(s) towards you (pull).
 - The door(s) is/are single width with a locked extension leaf.
 - The door(s) is/are heavy.
 - The width of the door opening is 78cm.
 - There is a small lip on the threshold of the entrance, with a height of 2cm or below.
 - There is a member of staff available for assistance at this entrance.



- Ramp/Slope Collapse -
- The ramp/slope is located on the path leading to the entrance.
 - The gradient of the ramp/slope is steep.

- Step(s) Collapse -
- The step(s) is/are located in front of the entrance.
 - There is/are 1 step(s).

[Cookie Policy](#) clearly marked.

- The height of the step(s) is/are not between 15cm and 18cm.
- The height of the step(s) is/are 6cm.
- The going of the step(s) is/are not between 30cm and 45cm.
- There is not a/are not handrail(s) at the step(s).

Reception

Collapse -

Reception

Collapse -

- The reception point is located on the ground floor, to the left as you enter the hotel via the hotel main entrance.
- The reception point is approximately 5m (5yd 1ft) from the hotel main entrance.
- The reception area/desk is clearly visible from the entrance.
- There is step free access to the reception point.
- There is a clear unobstructed route to the reception point.
- There are windows, TVs, glazed screens or mirrors behind the reception point which could adversely affect the ability of someone to lip read.
- The reception counter is not placed in front of a background which is patterned.
- The lighting levels at the reception point are good.
- The height of the reception counter is high (110cm+).
- There is sufficient space to write or sign documents on the counter.
- There is not a lowered section of the counter.
- The counter is staffed.
- Clipboards can be provided to anyone who is unable to use the desk.
- There is a hearing assistance system at the reception point.
- The type of system is a fixed loop.
- The hearing assistance system is not signed.
- Staff are trained to use the system.
- There is a touch screen.
- The touch screen is not at a suitable height for a wheelchair user.
- Signs and universally accepted symbols or pictograms, indicating lifts, stairs, WCs, circulation routes and other parts of the building are provided in the reception area.
- The type of flooring in the reception area is carpet and tiles.



Reception Waiting Area

Collapse -

- There is a waiting area close to the reception point.
- Access to the waiting area is unobstructed.
- There is a mixture of seating with and without armrests.

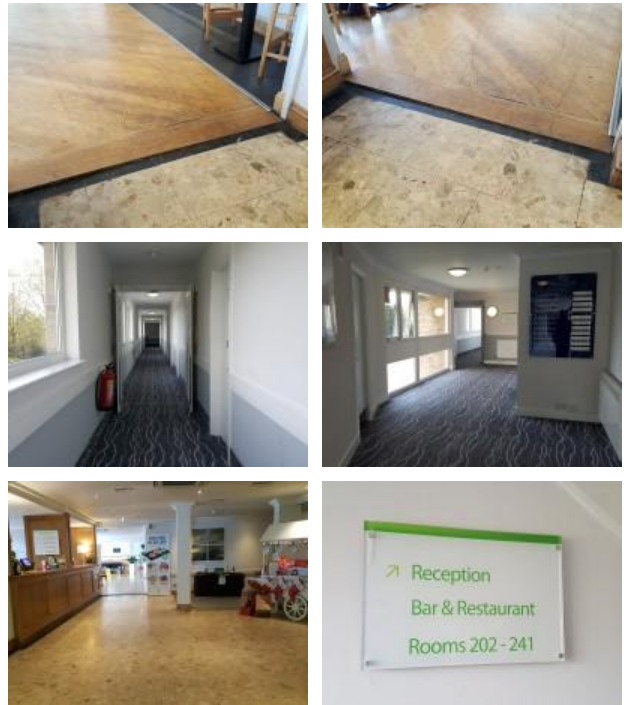
[Cookie Policy](#)

<ul style="list-style-type: none"> • There is sufficient space for a wheelchair user to use the waiting area. 	
Comments	Collapse -
<ul style="list-style-type: none"> • The touchscreen is used to register your car on arrival. 	

Getting Around

Collapse -

<p>Access</p> <p>Collapse -</p> <ul style="list-style-type: none"> • There is step free access throughout the majority of the building, via lift. • There is a slight ramp, with no handrails, for access to the bar/restaurant. • This level change is shown in photographs 1 and 2. 	
<p>Circulation</p> <p>Collapse -</p> <ul style="list-style-type: none"> • There are doors in corridors/walkways which have to be opened manually. • The type of flooring in corridors/walkways is carpet, tiles and wood. • There is some flooring in corridors/walkways which includes patterns or colours which could be confusing or look like steps or holes to some people. • There is some flooring in corridors/walkways which is shiny and could cause issues with glare or look slippery to some people. • There is good colour contrast between the walls and floor in the majority of corridors/walkways. • The lighting levels are varied. • Access to other floors/levels is via stairs. 	
<p>Signage</p> <p>Collapse -</p> <ul style="list-style-type: none"> • Wayfinding signage is provided. • The colour, design and typeface of signs is consistent throughout the building. 	
<p>Audio</p> <p>Collapse -</p> <ul style="list-style-type: none"> • This venue does play background music in public areas. • Music is played in the reception area and the bar/restaurant. • There is a hearing assistance system in the public areas of the building. • There is a fixed loop at reception. There is a fixed loop in the Chatsworth Suite. There is a portable loop available at reception that can be used throughout the hotel. 	



- The following information is for the restaurant/bar.
- The restaurant/bar is located on the ground floor, to the left as you enter the hotel via the hotel main entrance, beyond the reception area.
- There is step free access to the restaurant/bar.
- Full table service is available.
- There is a hearing assistance system.
- The system is a portable loop.
- The hearing assistance system is signed.
- Staff are trained to use the system.
- There is step free access within the restaurant/bar.
- There is ample room for a wheelchair user to manoeuvre.
- This area does play background music.
- The type of flooring in this area is carpet, tiles and wood.
- No tables are permanently fixed.
- Some chairs are permanently fixed.
- Some chairs have armrests on both sides.
- The nearest table is approximately 1m from the entrance/opening.
- The nearest table is approximately 1m from the till/counter.
- The distance between the floor and the lowest table is 36cm.
- The distance between the floor and the highest table is 105cm.
- The standard height for tables is 67cm.
- Plastic/takeaway cups are available.
- Plastic/takeaway cutlery is not available.
- Drinking straws are available.
- There are hand held menus, menu boards/signs and wall menus available.
- Menus are not available in Braille.
- Menus are not available in large print.
- Picture menus are not available.
- Menus are clearly written.
- Menus are presented in contrasting colours.
- The type of food served here is hot and cold meals and snacks.
- The lighting levels are good.
- Access to the additional seating area is via 2 clearly marked medium height steps.



Comments

Expand +

Conference / Meeting Facilities (Chatsworth Suite)

Collapse -

- Conference/meeting facilities are available.
- The conference/meeting facilities are located on the ground floor, ahead as you enter the hotel via the hotel main entrance.
- There is step free access to the conference/meeting facilities.
- The door opening width(s) is/are 75cm+ for the room(s).
- There is a hearing assistance system for the room(s).
- There are no chairs with armrests on both sides within the room(s).



[Cookie Policy](#)

- There is sufficient space for a wheelchair user to manoeuvre within the room(s).
- The lighting levels in the room(s) are good.
- Lighting levels are at least 100 lux at floor level.



Step(s) (Ground Floor)

Collapse -

- There is a/are step(s) located on the ground floor, to the right as you enter the hotel via the hotel main entrance.
- The step(s) is/are used to access The steps are used to access the ground floor rooms and the meeting rooms.
- There is/are 5 step(s).
- The step(s) is/are clearly marked.
- The height of the step(s) is/are between 15cm and 18cm.
- The going of the step(s) is/are between 30cm and 45cm.
- There is a/are handrail(s) at the step(s).
- The handrail(s) is/are on the right going up.
- Handrails are at the recommended height (90cm-100cm).
- Handrails do cover the flight of stairs throughout its length.
- Handrails are easy to grip.
- Handrails do extend horizontally beyond the first and last steps.
- The lighting levels at the step(s) are good.



Lift (Ground Floor Platform Lift)

Collapse -

- There is a lift for public use.
- The lift is located on the ground floor, to the right as you enter the hotel.
- The lift is clearly visible from the entrance.
- The lift is approximately 6m (6yd 1ft) from the hotel main entrance.
- The lift is a stair lift.
- A member of staff needs to be notified for use of the lift.
- A member of staff is required to operate the lift.
- The platform lift accesses a small level change.
- Clear signs indicating the facilities on each floor are not provided on lift lobby landings.
- There is a clear level manoeuvring space of 150cm x 150cm in front of the lift.
- The external controls for the lift are within 90cm - 110cm from the floor.
- The colour contrast between the external lift controls and the control plate is good.
- The colour contrast between the external lift control plate and the wall is poor.
- The clear door width is 77cm (2ft 6in).
- The dimensions of the lift are 77cm x 117cm (2ft 6in x 3ft 10in).
- There are separate entry and exit doors in the lift.
- There is not a mirror to aid reversing out of the lift.



- The lift does not have an audible announcer.
- The controls for the lift are within 90cm - 120cm from the floor.
- There is not a hearing loop system.
- The lift does not have Braille markings.
- The lift does not have tactile markings.
- The lighting levels in the lift are good.

Accessible Room(s) (Rooms 202 and 203)

Collapse -

<p>Accessible Room Information Collapse -</p> <ul style="list-style-type: none"> • The details in this section relates to the accessible room(s) with a lowered bath. • This type of accessible room is located on the ground floor. • There is step free access to this type of accessible room. • All accessible rooms of this type have similar specifications. • The ensuite transfer space for the accessible rooms varies from left to right. • Guests need to open a door between the lift and the room(s). • The narrowest width of the corridor leading to the room surveyed was 135cm. 	
<p>Bedroom Features Collapse -</p> <ul style="list-style-type: none"> • The accessible room surveyed is located on the ground floor, to the right as you enter the hotel via the hotel main entrance. • The accessible room surveyed at the time of the visit was Room 202. • There is step free access to the accessible room surveyed, via lift. • There is numbered signage on or near the accessible room door. • The door is manual with a key card lock. • The fob/card reader height is 114cm. • The width of the door is 86cm (2ft 10in). • There are lowered spy holes available. • The bed type is double. • The bed height is not adjustable. • The height of the bed is 59cm (1ft 11in). • The measurement between the bed base and floor is 13cm (5in). • The bed is moveable. • The room does have an unobstructed minimum turning space of 150cm x 150cm next to the bed. • The height of the desk is 78cm. • The desk is not height adjustable. • The desk knee recess does not have the recommended dimensions of 70cm (height) x 50cm (depth). <p>Cookie Policy of the knee recess is 73cm x 46cm.</p>	

- The room surveyed had a height adjustable chair with armrests and an armchair.
- Wardrobes have been adapted to allow use from a seated position.
- Light switches are between 75cm and 120cm (4ft) from floor level.
- Electric sockets are between 40cm and 100cm (4ft) from floor level.
- The window control type(s) for the room is a/are standard lever(s).
- There is an emergency alarm in the room.
- The emergency pull cord alarm is within reach and fully functional.
- The emergency alarm rings to reception.
- There is a flashing fire alarm beacon within the room.
- The type of flooring is carpet.
- There is also a single bed for a carer.

Ensuite Facilities

Collapse -

- The ensuite door opens outwards.
- The door weight is heavy.
- The door is locked by a twist lock.
- The width of the door to the ensuite is 86cm (2ft 10in).
- The dimensions of the ensuite are 252cm x 260cm (8ft 3in x 8ft 6in).
- The ensuite does have an unobstructed minimum turning space of 150cm x 150cm in front of the toilet seat.
- The ensuite has a non slip floor.
- There is an emergency alarm within the ensuite.
- The emergency pull cord alarm is within reach and fully functional.
- The emergency alarm rings to reception.
- There is a flashing fire alarm beacon within the ensuite.
- Disposal facilities are available.
- There is a/are pedal waste paper bin disposal units.
- There is a mirror.
- The mirror is not placed at a lower level or at an angle for ease of use.
- There is a shelf immediately next to or behind the toilet.
- The shelf is between 90cm and 100cm.
- There is a wash basin.
- The wash basin cannot be reached from seated on the toilet.
- The wash basin is placed higher than 74cm (2ft 5in).
- The height of the wash basin is 75cm.
- There are vertical wall-mounted grab rails on both sides of the wash basin.
- The tap type is lever.
- There is a mixer tap.
- There is not a soap dispenser.

[Cookie Policy](#)

Toilet Details

Collapse -

- The height of the toilet seat above floor level is 52cm (1ft 8in).
- The toilet has a covered cistern.
- There is a lateral transfer space.
- As you face the toilet pan the transfer space is on the left.
- The lateral transfer space is 169cm (5ft 7in).
- There is a flush, however it is not on the transfer side.
- There is not a spatula type lever flush.
- There is a dropdown rail on the transfer side.
- There is a/a wall-mounted grab rail(s) available.
- As you face the toilet, the wall mounted grab rails are on both sides.
- There is a vertical wall-mounted grab rail on the transfer side.
- There is a horizontal wall-mounted grab rail on the opposite side of the seat to the transfer space.
- There is a toilet roll holder.
- The toilet roll holder can be reached from seated on the toilet.
- The toilet roll holder is not placed higher than 100cm (3ft 3in).

Bath Details

Collapse -

- The ensuite has a lowered bath.
- The height of the side of the bath from floor level is 44cm (1ft 5in).
- The tap type is lever.
- There is a mixer tap.
- There is a shower over the bath.
- The shower head is height adjustable.
- The shower control type is lever.
- There is a/a wall-mounted grab rail(s) available for the bath.

Colour Contrast and Lighting

Collapse -

- The colour contrast between the external hotel room door and wall is poor.
- The colour contrast between the internal hotel room door and wall is poor.
- The colour contrast between the hotel room walls and floor is good.
- The colour contrast between the external ensuite door and wall is good.
- The colour contrast between the internal ensuite door and wall is poor.
- The colour contrast between the ensuite walls and floor is good.
- The colour contrast between the drop down rail(s) and

[Cookie Policy](#)

- The colour contrast between the wall-mounted grab rail(s) and wall is good.
- The toilet seat colour contrast is poor.
- The lighting levels in the room are low.
- The lighting levels in the ensuite are good.

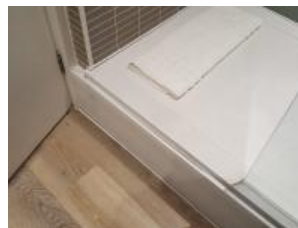
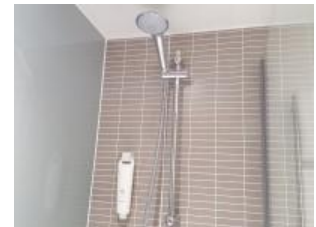
Standard Room(s) (Room 204)

Collapse -

Bedroom Features

Collapse -

- The room surveyed is located on the ground floor, to the right as you enter the hotel via the hotel main entrance.
- The room surveyed at the time of the visit was Room 204.
- There is step free access to the room surveyed, via lift.
- There is numbered signage on or near the room door.
- The width of the door is 71cm (2ft 4in).
- The bed type is double.
- The height of the bed is 48cm (1ft 7in).
- The measurement between the bed base and floor is 13cm (5in).
- Light switches are not within 120cm (3ft 11in) from floor level.
- There is not an emergency alarm in the room.
- There is not a flashing fire alarm beacon within the room.
- The type of facilities within the ensuite include; a toilet, a wash basin and a shower.
- The ensuite door opens inwards.
- The width of the door to the ensuite is 64cm (2ft 1in).
- There is not an emergency alarm within the ensuite.
- There is not a flashing fire alarm beacon within the ensuite.
- The tap type is lever.
- There is a mixer tap.

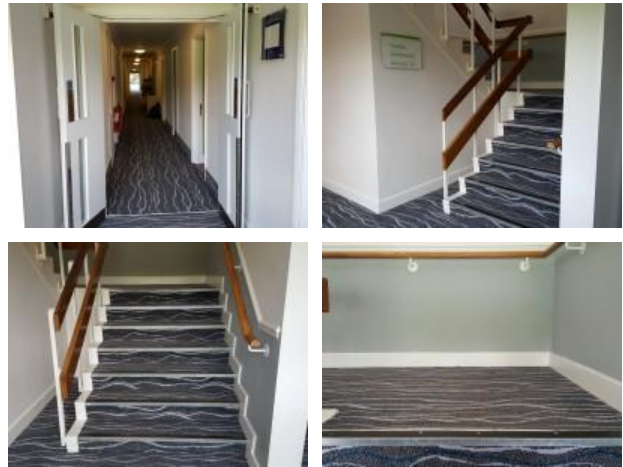


Colour Contrast and Lighting

Collapse -

- The colour contrast between the external hotel room door and wall is poor.
- The colour contrast between the internal hotel room door and wall is fair.
- The colour contrast between the hotel room walls and floor is good.
- The colour contrast between the external ensuite door and wall is good.
- The colour contrast between the internal ensuite door and wall is poor.
- The colour contrast between the walls and floor in the ensuite is good.
- The lighting levels in the room are low.
- The lighting levels in the ensuite are good.

<p>Stairs</p> <ul style="list-style-type: none"> • Stairs can be used to access other floors. • The stairs are for public use. • The stairs are located to the rear right hand side of the hotel, facing the rear car park. • The stairs are approximately 21m from the ground floor platform lift. • Signs indicating the location of the stairs are not available from the entrance. • There are manual, heavy, double doors to enter and exit the stairwell on all floors. • The floors which are accessible by stairs are LG and G. • There are 15 steps between floors. • The height of the step(s) is/are not between the recommended 15cm and 18cm. • The height of the step(s) is/are 19cm. • The going of the step(s) is/are not between the recommended 30cm and 45cm. • The steps are clearly marked. • There is a/are handrail(s) at the step(s). • The steps have a handrail on both sides. • Handrails are at the recommended height (90cm-100cm). • Handrails do cover the flight of stairs throughout its length. • Handrails are easy to grip. • Handrails do extend horizontally beyond the first and last steps. • There is a second lower handrail. • There is a landing. • Clear signs indicating the facilities on each floor are provided on landings. • The lighting levels at the steps are good. 	<p>Collapse -</p>
<p>Other Information</p> <ul style="list-style-type: none"> • The room(s) on the floors which are not accessible is/are Rooms 101-157 and The Harrington Suite. 	<p>Collapse -</p>
<p>Comments</p> <ul style="list-style-type: none"> • There are similar staircases throughout the right hand side of the hotel. 	<p>Collapse -</p>



- There is an/are accessible toilet(s) for public use.

- The accessible toilet surveyed is not for the sole use of disabled people.
- This accessible toilet is located in the reception lobby, to the right as you enter the hotel main entrance.
- This accessible toilet is approximately 4m (4yd 1ft) from the hotel main entrance.
- There is step free access to the accessible toilet.



Features and Dimensions

Collapse -

- This is a shared toilet.
- A key is not required for the accessible toilet.
- There is tactile and pictorial signage on or near the toilet door.
- The door opens outwards.
- The door is heavy.
- The door is locked by a lever twist.
- The width of the accessible toilet door is 85cm (2ft 9in).
- The dimensions of the accessible toilet are 160cm x 263cm (5ft 3in x 8ft 8in).
- The accessible toilet does have an unobstructed minimum turning space of 150cm x 150cm.
- The toilet has not got a non slip floor.
- The height of the light switch/pull cord is 100cm from floor level.
- There is a lateral transfer space.
- As you face the toilet pan the transfer space is on the left.
- The lateral transfer space is 87cm (2ft 10in).
- There is a flush, however it is not on the transfer side.
- There is a spatula type lever flush.
- There is a dropdown rail on the transfer side.
- There is an emergency alarm.
- The emergency pull cord alarm is fully functional.
- There is not a flashing fire alarm beacon within the toilet.
- Disposal facilities are available in the toilet.
- There is a/are female sanitary and non-infectious waste disposal units.
- There is not a/are not coat hook(s).

Position of Fixtures

Collapse -

- There is a/are wall-mounted grab rail(s) available.
- As you face the toilet the wall-mounted grab rail(s) is/are on both sides.
- There is a vertical wall-mounted grab rail on the transfer side.
- There is a horizontal wall-mounted grab rail on the opposite side of the seat to the transfer space.
- There is a mirror.
- The mirror is not placed at a lower level or at an angle for

[Cookie Policy](#)

- There is not a shelf next to the toilet.
- The toilet has a lid.
- The height of the toilet seat above floor level is 52cm (1ft 8in).
- There is a toilet roll holder.
- The toilet roll holder can be reached from seated on the toilet.
- The toilet roll holder is not placed higher than 100cm (3ft 3in).
- There is a wash basin.
- The wash basin can be reached from seated on the toilet.
- The wash basin is not placed higher than 74cm (2ft 5in).
- There is a vertical wall-mounted grab rail on the left hand side of the wash basin.
- The wash basin tap type is lever.
- There is a mixer tap.
- There is a soap dispenser.
- The soap dispenser cannot be reached from seated on the toilet.
- The height of the soap dispenser is 67cm.
- There is a towel dispenser.
- The towel dispenser can be reached from seated on the toilet.
- The towel dispenser is placed higher than 100cm (3ft 3in).
- The height of the towel dispenser is 102cm (3ft 4in).
- There is a hand dryer.
- The hand dryer cannot be reached from seated on the toilet.
- The hand dryer is placed higher than 100cm (3ft 3in).
- The height of the hand dryer is 113cm (3ft 8in).

Colour Contrast and Lighting

Collapse -

- The contrast between the external door and wall is good.
- The contrast between the internal door and wall is good.
- The contrast between the dropdown rail(s) and wall is good.
- The contrast between the wall-mounted grab rail(s) and wall is good.
- The toilet seat colour contrast is poor.
- The contrast between the walls and floor is poor.
- The lighting levels are good.

Baby Changing Facilities

Collapse -

- Baby changing facilities are located within the accessible toilet.
- The baby change table is not set against the wall, permanently fixed at 75cm from the floor.
- The baby change table is not height adjustable.
- The height of the baby change table once extended is

[Cookie Policy](#)

Standard Toilet(s)

Collapse -

- Standard toilet facilities are available.

Access to Standard Female and Male Toilet(s) Collapse -

- The female and male toilet facilities that were surveyed are located on the ground floor, to the right as you enter the hotel main entrance.
- The female and male toilets are approximately 6m (6yd 1ft) from the hotel main entrance.
- There is step free access to the female and male toilet(s).
- There is tactile and pictorial signage on or near the toilet door.
- An ambulant toilet with wall-mounted grab rails is available.
- The wash basin tap type is twist/turn.
- There is not a flashing fire alarm beacon within the toilets.
- Lighting levels are good.



Baby Change Facilities Collapse -

- Baby change facilities are located within the venue.
- Baby change facilities are located within the female/male standard toilets.
- There is step free access to the baby change facilities.
- The baby change table is not set against the wall, permanently fixed at 75cm from the floor.
- The baby change table is not height adjustable.
- The height of the baby change table once extended is 110cm (3ft 7in).

Comments Collapse -

- There is a dropdown rail to the right of the toilet in the ambulant cubicle.

Who we are...

- Homepage
- About Us
- Access Icons
- FAQs
- Contact Us
- Press and Media

The way we work...

- Website Conditions
- Acceptable Use Policy
- Cookie Policy
- Privacy Policy
- Accessibility Policy
- Common Access Guide Terms Explained

Our support for business

- Disabled Charities and Useful Links
- FAQs Around Our Surveyors

Follow @DisabledGo

Join us...

- Facebook
- Twitter
- Google+
- Switch to mobile site

